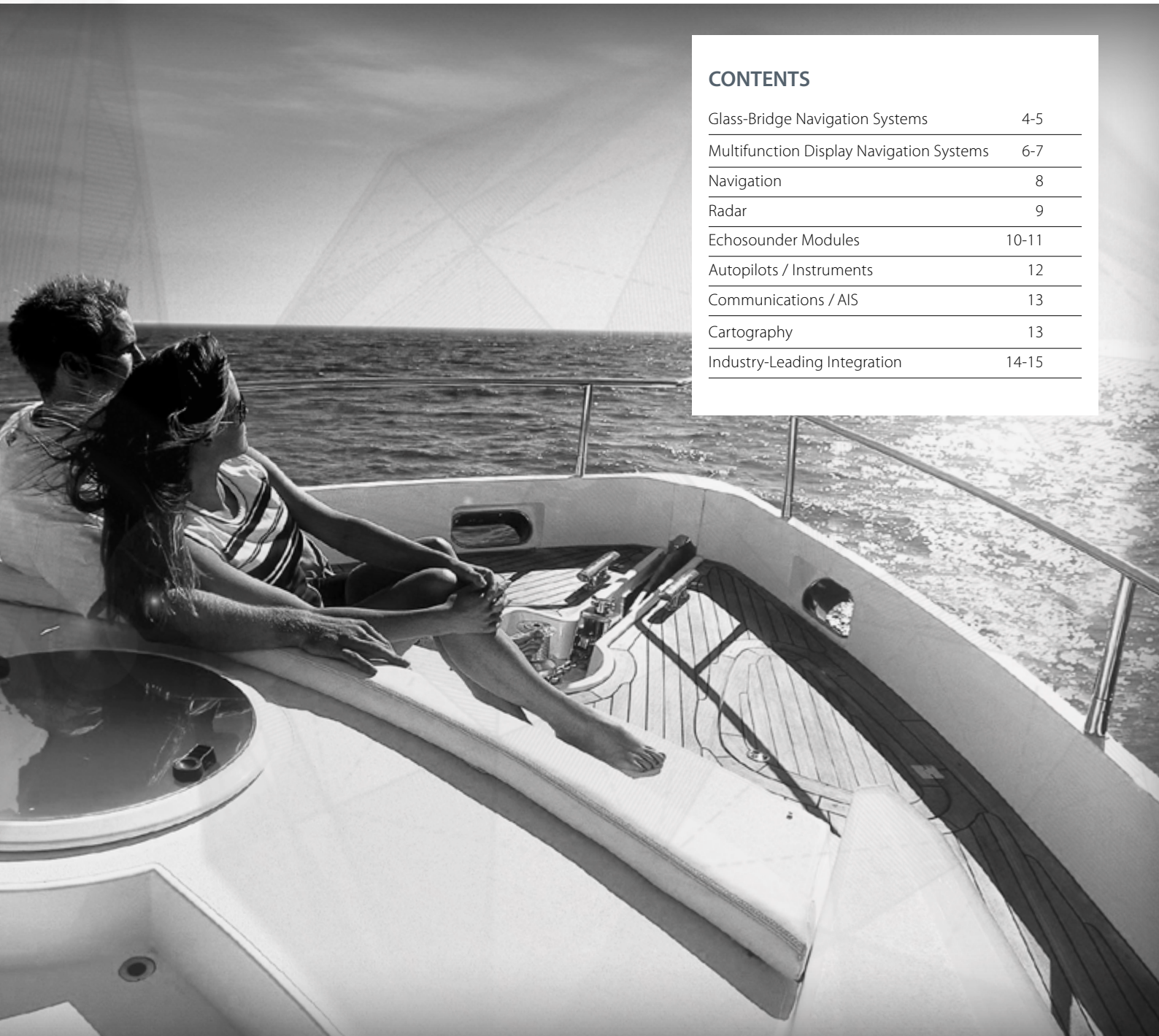






For over sixty years the name SIMRAD has meant one thing: rock solid, high performance marine electronics. It's a reputation that was earned the hard way, on commercial fishing vessels in the challenging waters of the North Atlantic. Today we carry on this legacy, combining advanced technology with intuitive user-friendly designs. So whether your destination takes you around the harbor, or around the world, SIMRAD electronics will give you the confidence you need for a fun, safe trip.



CONTENTS

Glass-Bridge Navigation Systems	4-5
Multifunction Display Navigation Systems	6-7
Navigation	8
Radar	9
Echosounder Modules	10-11
Autopilots / Instruments	12
Communications / AIS	13
Cartography	13
Industry-Leading Integration	14-15



NEW Glass-Bridge Navigation Systems



NSO evo2



• Simrad MO Monitors are available in 3 Sizes: 16-inch, 19-inch, and 24-inch

MO19 Monitor

NEW NSO evo2

Simrad NSO evo2 Glass-Bridge systems are perfectly suited to blue water powerboats and commercial vessels.

They combine high-power processing for fast charting, sonar, radar and entertainment, individual control of a variety of dual widescreen displays, a user interface for intuitive multi-touch control and integration capabilities.



NSO evo2 Processor



OP40 Controller



Pinch-to-zoom
with Multi-touch.

Processor Features

- Dual independent video output
- Wide-screen video support
- Multi-touch, pinch-to-zoom support
- Integrates with 4G Broadband Radar, BSM-2 Chirp Echosounder and much more
- OP40 Control option
- Widest choice of cartography options
- Multiple video inputs
- Dual Quad-core processor

Monitor Features

- High-Bright, Multi-Touch Models & lower brightness pilot house models without touchscreen.
- 8mm low profile all glass design enhances look of helm
- HDMI, DVI, Composite Inputs

MO-T High-Bright Touchscreen Models

- 1000 nits Hi-Bright, Sunlight Viewable Screen
- Multi-touch Touchscreen Control

MO-P Pilothouse Models

- OP40 Controlled
- 300 nits Brightness for Pilothouse Operation



Control two monitors independently
with just a single NSO evo2 processor.

NEW Multifunction Display Navigation Systems



Pinch-to-zoom
with Multi-touch.

NSS evo2



NEW NSS evo2

An easy to use, fresh but familiar tablet-style user interface, multi-touch screen control, push-to-select rotary knob for precision control and very speedy response, the NSS evo2 is perfectly designed for use in calm or rolling seas. We call it TouchSensible – you will call it amazing.

Add in our Simrad exclusive dedicated power cruising screens, the widest available fishfinding technologies on the market, industry-leading integration capabilities and stylish low-profile, flush mount design and it just makes sense – the NSS evo2 is the most enticing cruising and fishing system on the market.



Features

- Multi-touch, pinch-to-zoom support
- Autopilot integration
- Regional Navionics® cartography
- GoFree™ wireless compatible
- Internal GPS antenna
- Bright LED Backlighting
- Micro-SD media card slot
- StructureMap™ overlay & Insight Genesis™ map generation
- NMEA2000®, 0183® & Ethernet connectivity
- Broadband Radar™, SonicHub® & StructureScan® HD compatible
- Video integration

Navigation



NSE

Simrad's NSE range of multifunction displays provide powerful networking and integration capabilities and professional level performance with sophisticated charting, radar and echosounder technology. The classic design with flush mount options compliment any helm and the robust engineering with waterproof connections have been designed to withstand harsh environments.



Features

- Autopilot integration
- Alphanumeric keypad with rotary controller and dedicated 'one-touch' buttons
- Widest Cartography options available
- BSM-1, BSM-2 & StructureScan® HD compatible
- Video integration
- StructureMap™ overlay & Insight Genesis™ map generation
- NMEA2000®, 0183® & Ethernet (3) connectivity
- Broadband Radar™ & SonicHub® compatible
- Bright LED Backlit display
- SD media card slot & 2 x USB

NSS Sport

Simrad's NSS range of touchscreen multifunction displays bring powerful performance options to recreational boaters, enhanced by GoFree™ wireless technology. The TouchSensible™ control interface has been specifically developed for the marine environment and incorporates touchscreen with tap, touch and swipe gestures, smooth rotary controller and minimalist keypad to ensure outstanding functionality and operation in any sea state.



Features

- Easy to use touchscreen control
- Autopilot integration
- Widest Cartography options available
- GoFree™ wireless compatible
- Internal GPS antenna
- Bright LED Backlighting
- StructureMap™ overlay & Insight Genesis™ map generation
- NMEA2000®, 0183® & Ethernet connectivity
- Broadband Radar™, SonicHub® & StructureScan® HD compatible
- Video integration

Additional Features NSS7

- Built-in BSM-1 echosounder

Additional Features NSS12

- 3 x Ethernet ports

Radar



Broadband Radar™

Enjoy a crystal clear image, from the bow of your boat, with this incredible Broadband Radar. This solid state technology does away with the traditional magnetron and instead offers emission levels that are lower than a mobile phone, making them safe to mount anywhere, on any size of boat. There are two Broadband Radar options, the outstanding Broadband 3G™ Radar, which has a 28nm working range, and the revolutionary Broadband 4G™ Radar, which has advanced features and up to a 36nm working range.

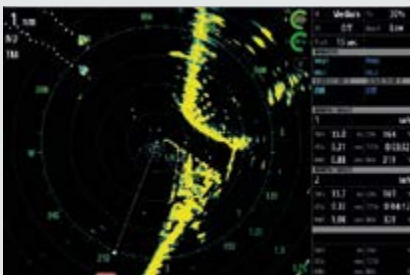
Broadband Radar Common Features

- Crystal clear image
- Automatic clarity
- MARPA target tracking
- Dual guard zones
- InstantOn™
- Low power consumption
- Extremely low emissions
- Quick installation

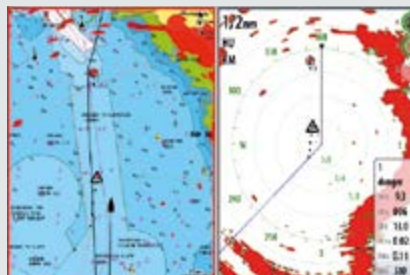
Advanced Broadband 4G Radar Features

- Up to 36nm working range
- Beam Sharpening
- High speed mode (48 RPM)
- Dual Range
- Advanced target detection

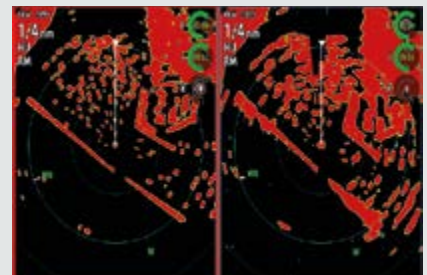
Best in Class Radar Performance



Display up to MARPA targets



Chart/Radar Overlay



Unrivalled target discrimination

HD Digital Radar



The Simrad family of HD Digital Radars offers exceptional detection of targets with virtually no clutter up to a range of 72nm. Features include the innovative Motion Radar Display, which instantly distinguishes moving vessels from fixed objects and land masses.

Features

- Up to 72nm working range
- Available in 6kW and 10kW models
- MARPA target tracking
- Guard zones
- Advanced digital signal processing
- Auto harbour and offshore modes
- True Motion Display

Echosounder Modules

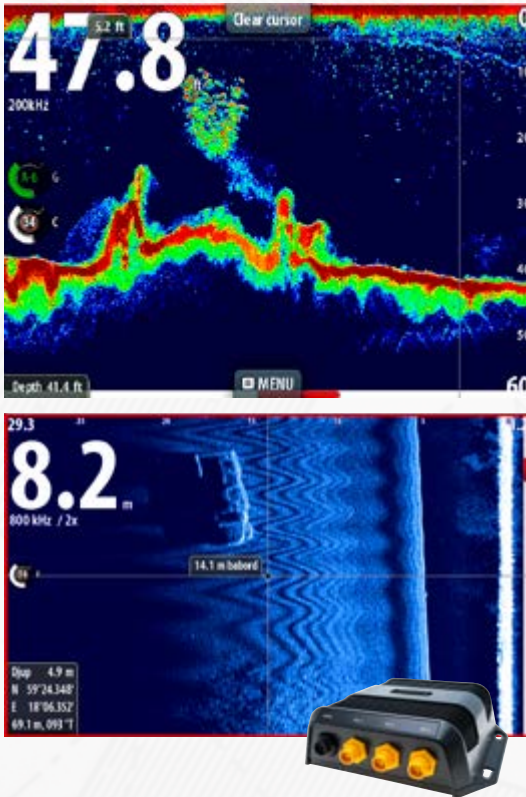
NEW SonarHub™

SonarHub is Simrad's new all-in-one sounder solution combining StructureScan® HD and CHIRP sonar. It is ideal for marking fish and tracking lure action, and can provide easy-to-understand, picture-like views of structure and bottom detail.

Offering a powerful performance advantage in any situation, the new module's Frequency Sweeping Pulse Compression technology – known as CHIRP sonar — provides high-definition detail to depths of 3,500 feet; while its StructureScan HD functionality gives boaters picture-like displays for more productive fishing, diving, and search and recovery operations.

Features

- CHIRP
- Utilise CHIRP with the Airmar™ 150 transducer for optimal sonar performance
- StructureScan HD
- Side and DownScan plus Single Frequency Sonar (50 kHz, 83 kHz, 200 kHz)
- Performance identical to current StructureScan HD
- Broadband dual frequency: Single frequency sonar (83, 50, 200 kHz) and DownScan Imaging also works with HDI Transducers.
- Use any of the existing 50/200 kHz and 83/200 kHz Simrad/Airmar 7 pin blue transducers for excellent single frequency performance



StructureScan® HD

Revolutionise the way you see underwater with the ultimate in reality echosounding technology. Not only can you see high detail with SideScan coverage, but also exclusive DownScan™ images to provide a true 180° view below your boat. This high frequency imaging gives a life-like representation of the water column, the bottom and any structure. See fish, rocks, weeds and wrecks like never before. Great for fishing, diving and anchoring.

Features

- Picture perfect, DownScan™ imaging
- TrackBack™ to scroll through echo history
- Panoramic, SideScan view
- StructureMap™ underwater chart generation
- Overlay DownScan onto Broadband Sounder images
- Range of transducer options - bronze, plastic, transom, thru-hull and deep-vee





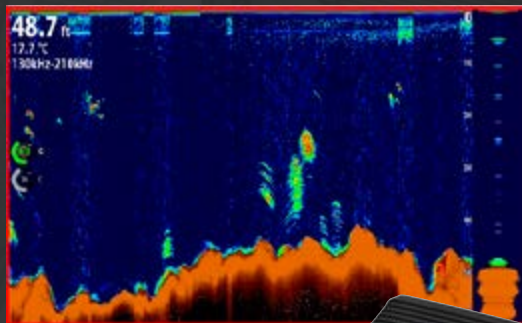
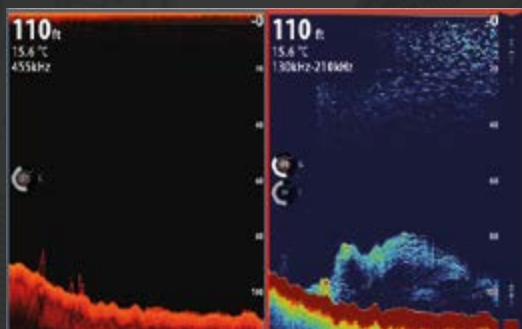
BSM-2

The latest advancement in Broadband Sounder technology provides exceptional performance benefits that leave 3kW sounders in the shallows. Crisp, clear targeting with CHIRP technology and a 3000m working range make BSM-2 the choice of professionals and serious sport fishermen.

Features

- 3000m range*
- Selectable frequency
- CHIRP
- Unprecedented resolution
- Low noise
- Range of transducer options

*Transducer dependant



Autopilots / Instruments



AP24 and AP28

Simrad's AP24 and AP28 autopilot control interfaces offer proven performance and reliability for all types of leisure boats, from 35 to 80 feet and for every on water activity. Integrated turn patterns, dodge functionality and no drift mode are just a few of the many features packed into these award-winning autopilots.

Features

- Easy to use
- Large, clear digits
- Integrated turn patterns
- Dodge function
- No drift mode
- Virtual rudder feedback
- Constant depth tracking
- Advanced wind steering



IS40 & OP10

Combining an OP10 autopilot controller with an IS40 display creates an intuitive and easy to use autopilot control system. The flexibility of this allows you to mount the controller and the display in the most suitable positions for each.

Features

- Intelligent sail steering
- Smart Manoeuvre
- Full colour screens
- Bonded glass display
- Chartplotter integration
- Easy to use

IS40 Colour Displays

Simrad's best in class, full colour, digital instrument displays are incredibly easy to use, bright and highly visible, with a massive 170° viewing angle. Featuring multiple data pages to suit almost every motor cruising requirement, the IS40 enables you to see the information you want, when and where you want. With engine data integration and autopilot capabilities, the IS40 is much more than a traditional instrument display.



Features

- Large, full colour display
- Straight forward menu system
- See speed, depth, wind, autopilot, engine data and more
- Highly visible bonded LCD
- 170° viewing angle
- Bright screen with high contrast
- Zero condensation
- Micro-C connectivity
- Easy installation

Communications / AIS



RS35

The RS35 is a versatile and rugged, fixed mount, class-D DSC VHF radio with everything required to communicate, including a built-in AIS receiver. Easy to use with an extra large, high resolution display, smooth rotary controller and buttons.

Features

- High resolution display
- Class-D DSC
- AIS receiver
- Loud and clear audio
- AIS plot, waypoint storage, MOB & Track Your Buddy
- Dual/Tri watch function
- NMEA2000® & 0183® connectivity



HS35

The HS35 is an optional wireless handset, which offers complete mobility and intercom capability of the RS35 VHF radio. Users can network up to two wireless handsets per system. This innovative handset gives you total freedom of movement on board your boat.

Features

- High resolution display
- 100m range
- Inductive charging with 8 hour battery life
- Fully waterproof
- Complete radio control



NAIS-400

Reduce your risk of collision with this latest generation, fully integrated, Class-B AIS transponder - essential for navigating today's busy shipping lanes and congested ports. The NAIS-400 is ideal for networking with any NSS, NSE or NSO chartplotter / multifunction display and Simrad RS VHF system.

Features

- Class-B Approved
- Send & Receive
- Integrated solution
- NMEA2000®, 0183® connectivity
- USB port
- Waterproof to IPX7 standard
- Lightweight
- Low power consumption

Cartography

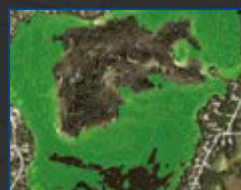
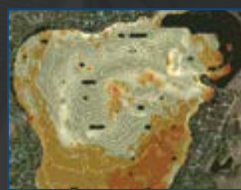
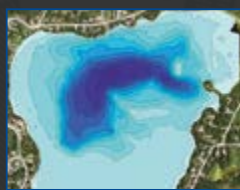
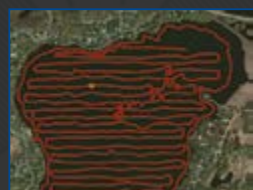
C-MAP

C-MAP MAX-N Wide enhances your navigation experience with harbour and approach chart detail, detailed marina charts and coverage of inland rivers and lakes.

Insight Genesis



Create your own map from real sonar data that you record with accurate, high-resolution 1-foot contours, bottom hardness and even vegetation overlays... Know what's below for safer navigation.



Navionics

www.navionics.com

Powerful plug-and-play electronic charting choices for supreme navigational awareness. Simply insert into your Simrad chartplotter for the greatest detail possible.

Features

- Use your sonar to create customized maps in minutes
- Easily update maps for safer navigation
- Auto-Correction for tides



insightstore.navico.com

Industry-Leading Integration

Simrad marine electronics are among the most integrated products on the market today; from the award winning BSM-1 Broadband Sounder, BSM-2 CHIRP sounder and StructureScan® HD system and the ability to control some of the industry's best technology including Simrad's Broadband radar, autopilots, SonicHub, Sirius Weather, AIS and other products – built-in.

Stand-alone, in a network with multiple NS Series systems or on a tablet using Simrad GoFree Wireless Wifi-1 to view and control the system, **Simrad products have everything you need.**



High Speed GPS

Incredible position accuracy.

- 16-channel 10Hz GPS antenna (NMEA2000®)
- Superior signal acquisition
- Compact design
- Easily flush mounted



WIFI-1

View and control your MFD with your tablet or smartphone from anywhere on board.

- Free viewer app
- Free controller app
- Open protocol data for custom app development



SonicHub®

Fully integrated marine audio server.

- Control your music from your multifunction display
- iPhone, iTouch & iPod compatible
- Play MP3 files via the USB drive
- Fully waterproof



Echosounder Modules

Raising the bar in fish finding technology.

- Advanced digital processing
- Incredible targeting & fish detection
- High definition of bottom at speed
- New SonarHub™ with CHIRP and StructureScan





CZONE

Turn your vessel into a smart boat with CZone digital switching.

- Full electrical panel on your display
- Smart boat modes
- Monitor tanks and power consumption
- Custom alarms and vessel status

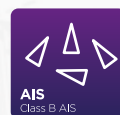
Find out more: www.bepmarine.com



Autopilot

Award-winning and ocean-proven autopilot systems.

- Integrated turn patterns
- Dodge function
- Virtual rudder feedback
- Advanced wind steering
- Dedicated head unit or NS series



AIS

Overlay AIS equipped vessel information.

- Class B AIS transponders
- See and be seen technology
- Track and identify vessels for safe navigation
- Black box module

AIS

SIMRAD

HD Digital Radar™

VHF Radio

Broadband Radar™



Broadband Radar™

A revolution in recreational radar.

- Innovative FMCW technology
- Unrivalled performance
- Eliminates "main bang" dead zone
- Efficient low-power technology
- Performance features with new Broadband 4G™ Radar



HD Digital Radar

High-definition radome and open array radar.

- 4kW dome, 6kW, 10kW & 25kW open arrays
- High definition clarity
- True colour displays for storm imagery
- Auto modes with reduced screen clutter

SIMRAD

Sales & service worldwide

Americas

Navico Inc.
410 Amherst St, Suite 110
Nashua, NH 03063

Tel: 1-800-628-4487
(toll-free within U.S.)
or 603-324-2042 (direct)

Asia Pacific

Navico Asia Pacific:
44 Arrenway Drive, Rosedale,
Auckland, New Zealand

Tel +64 9 481 1800
sales.apacnz@navico.com

Europe/

Middle East/Africa

Navico Logistics Europe BV
Donker Duyvisweg 56
3316 BM Dordrecht,
The Netherlands

Tel: + 31 78 65 30 000
Fax: +31 78 65 30 055

Visit Simrad-Yachting.com
for a list of certified dealers



Use a QR Code reader app on your
smartphone to access Simrad-Yachting.com

SERVICE BEYOND THE STANDARD.



In addition to a standard warranty program, Simrad Yachting has now expanded its service offerings with the Advantage Service program. This program, which is free and available to

all Simrad Yachting customers, offers the most comprehensive service and support available today.

The Advantage Service program aims to provide the best possible experience with Simrad Yachting products, even on occasions when support or replacement is required. Simrad Yachting stands for high quality both in its products and support offerings.

Simrad-Yachting.com